



Creating Community

Serving the Community

The Animal Shelter of the Wood River Valley is a private, independent, non-profit animal welfare organization that has been serving the community since 1982. We are governed by a volunteer Board of Directors, employ 14 staff members and are helped by our 181 volunteers to care for the over 1,500 animals we serve every year. Our organization is the first no-kill animal shelter in the State of Idaho and one of the only shelters in the United States to offer a community no-cost spay/neuter program. We receive no government funding, relying solely on donations and service fees to operate. We are proud to be a leader in sheltering practices by providing model programs and services for the community and the homeless animals we care for.



Table of Contents

Letter from the Executive Director Our Mission	4
2010 Shelter Numbers Grants Received in 2010	5
Community Outreach Programs	6
Shelter Services	8
Community Services	10
Way of Giving	12
Financials	13
Donors	14
Board of Directors Management Group Future Goals	19



Our Mission

The Animal Shelter of the Wood River Valley promotes companion animal welfare by providing temporary shelter for homeless pets, adopting them to qualified homes, and reducing animal abuse, neglect and overpopulation through community education and spay/ neuter services.

Dear Friends of the Animal Shelter,

When I started working at the Animal Shelter of the Wood River Valley over 5 years ago never did I imagine I would be part of an organization that has such a broad impact on our community. While the core of our mission is to house homeless animals until they can get adopted, we are so much more than that. The Animal Shelter isn't just about animals; it is also about making a better community.

Each day I see firsthand how our work touches and strengthens our community far beyond our walls. I was reminded of this when I received an email from Harry Stevens who adopted a dog from us last year who he now calls "Hailey." In his letter he said that because of his wonderful experience at our Shelter he went home to California and decided to volunteer at his local animal shelter. He writes, "I can't thank you all enough for awakening me to all these animals and their needs. While the shelter I volunteer at is not a no-kill shelter, it is much like the Animal Shelter of the Wood River Valley in that they too provide all cats, dogs, and other animals with as much love as can be dispensed in one day so that the animals feel loved. The staff and volunteers are absolutely dedicated to seeing that every adoptable animal is found a loving home. The down side to the business is that I have seen animals come in that have been treated as cruelly as you can treat an animal but mostly I see animals that not only respond to loving care but thrive on it. I tell you all of this because not only am I amazed at all the wonderful work that animal shelters do for animals but because your enabling me to adopt Hailey has made me a much better person."

Clearly the work we do at our Shelter reaches far beyond our walls. As an organization we understand that we are never going to "shelter" our way out of the problems of animal cruelty, abuse, neglect, or pet overpopulation. As the valley's leader in animal welfare we know that to tackle these issues we must serve the entire community and not just the homeless pets. The scope of the services we provide to this community are experienced every day in the many community outreach programs, the extensive shelter services, and the community involvement in our organization. None of this would be possible without your unwavering dedication and generosity to this extraordinary organization. The Animal Shelter of the Wood River Valley is here because of your support, and we thank you. Together, we will continue to make a difference in the lives of the animals who rely on us each year and the community we are all a part of.

Sincerely,

Jo-Anne Dixon
Jo-Anne Dixon DVM

Executive Director/ Medical Director

2010 Shelter Numbers Impacting the Community

365 number of days we cared for animals

1500 + animals received shelter services

388 animals adopted from our Shelter

257 lost animals reunited with their owners

363 animals altered in our community no-cost
spayed or neutered program

247 Shelter animals spayed or neutered

371 microchips placed

700 impounded/surrendered animals

425 rabies vaccinations given

67 average number of animals at the Shelter each day

138 cats tested for feline leukemia and FIV

13,551 volunteer hours logged

6,000 lbs. of pet food distributed for pets of needy
families through our Paws for Hunger Program



Grants Awarded in 2010

Deer Creek Fund of the Helen K. and Arthur E. Johnson Foundation

Grant monies awarded to help underwrite the expense
of our No-Cost Community Spay Neuter Program

The American Society for the Prevention of Cruelty to Animals (the "ASPCA")

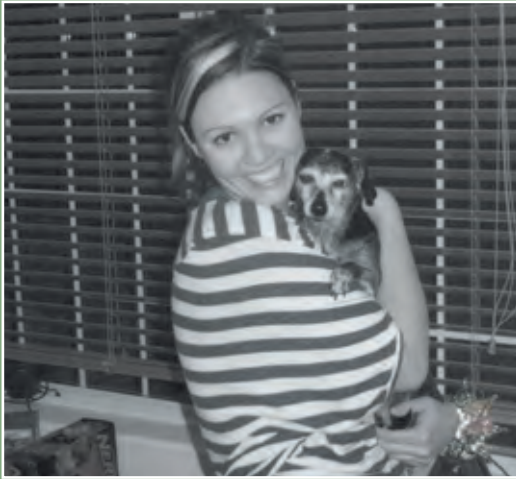
Grant monies awarded to help underwrite the expense
of our No-Cost Community Spay Neuter Program

Animal Farm Foundation

Grant monies awarded to help our Shelter's
efforts to restore the image of the American Pit Bull Terrier,
and to protect him from discrimination and cruelty

Donald W. and Gretchen K. Fraser Fund in the Idaho Community Foundation

Grant monies awarded to help underwrite the expense
of our No-Cost Community Spay Neuter Program



Team Special K

When Kat came to the Shelter to adopt a dog she knew, having never owned a dog before, that she needed one who already knew the ropes. Kat's choice for her first dog was just the second chance "Special" was waiting for. Special, a 13-year-old dachshund came to the Shelter when she was found as one of 20 dogs living in a hoarding situation. A testament to how resilient animals can be, Special lived up to her name from the minute she walked through our doors. This spry little dog full of energy and personality was exactly what Kat was looking for. You can now find "Team Special K," as Kat now refers to them, exploring the world together.

Special's story is another example of how our Shelter is a direct reflection of our community. Unlike other shelters, adoptability is not determined by age or situation. Our programs and services at our Shelter support and strengthen the lives of people and animals in our community regardless of age, economic background, or life situation in which they find themselves.

Community Outreach Programs

Our no-kill Shelter is woven into the heart of this community and is a big part of what makes the Wood River Valley such a wonderful place to live. The collective generosity of our community has helped us create and advance the many innovative community outreach programs and services our shelter provides. The scope of the services we provide to the Valley's residents and their pets go far beyond the walls of our facility.

Paws for Hunger

Our "Paws for Hunger" program, in partnership with the Hunger Coalition, is our "pet food bank." We recognize that the effects of the economy reach far beyond people. Through the Paws for Hunger program the Animal Shelter collects donations, purchases pet food, and delivers it to the Hunger Coalition where it is distributed to feed the pets of people in need. In 2010 we distributed over 6,000 lbs. of food to hungry pets in our community.

Community Education

Real change can only occur when you couple services with education. A big part of our mission is to teach the members of our community how to humanely care for animals and how to be responsible pet owners. The Shelter provides many on and off-site educational outreach programs to school children and adults to support our teaching efforts and reach out to the community. The Shelter also provides many opportunities for visitors and members of the community to interact

with Shelter residents as a way of improving the quality of life for the animals.

Advocates for Animals

We recognize that animal abuse and human abuse often go hand in hand. "Advocates for Animals," our partnership program with The Advocates for Survivors of Domestic Violence, helps the animals of women and children who are fleeing domestic violence situations and need temporary assistance with veterinary care and housing for the animal members of their family.

Community No-cost Spay/Neuter Program

We will never be able to "shelter" our way out of the pet overpopulation problem in our community. Spaying and neutering is the only way we can ever hope to remain a no-kill shelter. The ASWRV's Spay/Neuter program provides spay/neuter services to any pet of a Blaine County Resident at no charge. Clinics take place at the Shelter and are held weekly throughout the year.

Paws on Location: Blaine Manor

Animals bring comfort to people of all ages. Our program "Paws on Location: Blaine Manor" focuses on enhancing the quality of life for the residents of Blaine Manor Assisted Living Center. Each week Shelter staff and volunteers bring shelter dogs to visit the residents. The visits help our dogs get more socialization while brightening the day of the Blaine manor residents.





Soot's Story

When a lost animal is found without any identification the odds are against them for getting back home. So when a large black cat was found and brought to the Shelter without a collar or tags we knew the chances of finding his owners was slim. But as with all the stray animals that come through our door, we scan each to see if they might have a microchip and luckily this cat did. With a quick phone call we learned his name was Soot and his owners were not far away.

Soot's microchip identification had been placed under his skin when he was first a kitten at the Shelter years before. Each of our Shelter animals receive a variety of services including a veterinary exam, vaccinations, spay/neuter, microchip placement and temperament testing before they are ever put up for adoption. We know that our community counts on us to adopt out safe and healthy animals. The microchip is just one of the many shelter services we provide to the community and our shelter animals to help ensure each adoption is a success.

Shelter Services

The core of our mission is to take in and care for the homeless, abandoned, and neglected animals in our community and adopt them out to new forever homes. We know the community counts on us to provide them with healthy and safe adoptable animals. In order to accomplish this while remaining no-kill, our Shelter has designed and implemented a comprehensive set of model shelter services and practices to best ensure that we meet the needs of our animals as well as our community.

Veterinary Care

Since 2006 the Animal Shelter of the Wood River Valley has had a veterinarian and a certified veterinary technician on staff to provide medical and surgical care for the Shelter residents. Every shelter animal receives comprehensive care including a veterinary exam, vaccinations, worming, spay/neuter surgery, feline leukemia/FIV testing, and microchip placement. In addition, each year many special needs animals come through our door. We are committed to returning animals with treatable conditions back to health, regardless of whether they are elderly, blind, deaf, disfigured, or injured, so that they can also be adopted into permanent homes.

Canine Temperament Evaluation and Behavior Training

In order to try to ensure that we are adopting out safe dogs into our community, before adoption we require each shelter dog

to undergo a temperament evaluation with our trained staff. Once determined to be safe and adoptable, our behavior team creates an individual behavior training plan for each dog designed to help further increase the adoptability of that animal.

Enrichment Program for Shelter Residents

Our animal shelter provides temporary care for homeless pets. As a no-kill shelter we care for each adoptable animal until it finds a new home without a specific limit of time for its stay. We recognize that while we try to provide the best environment for our residents, shelter life is often stressful for many animals. The Shelter staff work hard to make sure each animal gets exercise and human interaction each day. We have also designed enrichment programs for all our animals to try to reduce stress and boredom while they wait for their new home.

Adoption Guarantee and Adoption Counseling

As an adoption guarantee shelter we stand by each and every one of our adoptions. If for any reason a placement does not work the animal may come back to the shelter at any time. To try to further ensure the success of each adoption we provide adoption counseling to best match the needs of each animal with the requirements of their new potential family. Our goal for each of our adoptions is to result in a successful placement for the lifetime of the animal.





Our Own Dr. Spock

Found as a stray in the spring of 2010, Spock was an obvious choice for his name once we saw his ears. Like many dogs at the Shelter Spock initially did well in the shelter environment but over time he began to show signs of stress and became depressed. He was soon placed in a foster home and with the special care of his foster parents Cathy and Greg Boylston, Spock was back to his old self in no time. He was adopted in October into his new forever home with the Malko family, including his new best friend El Ray the dog.

The Malkos recently had Cathy and Greg over for dinner to thank them for helping Spock along the way. While Spock was glad to see Cathy and Greg he knew he finally had a home of his own with the Malkos.

The Shelter's foster program is another wonderful example of how while helping our homeless animals we also help strengthen our community by bringing its members together.

Community Support

We are proud to say we live in a community that cares enough about the welfare of its animals to have a locally funded and supported no-kill animal shelter. I believe it speaks volumes as to the heart of this community. We could not accomplish what we do without a significant investment of time and money from our community of supporters and volunteers. We are funded almost exclusively by private donations and in 2010 our volunteers logged almost 14,000 hours.

Adopt a Shelter Pet

Each year hundreds of animals come to our Shelter needing homes. In the 29 years since the Animal Shelter opened we have adopted out nearly 10,000 animals. It is rewarding to hear from our many adopters how our shelter alums have brought such joy to their family and helped strengthen our community. We encourage potential adopters to meet shelter residents online at www.animalshelterwrv.org where you can also keep up with shelter happenings on our **Animal Shelter Blog** or by following us on **Facebook**.

Volunteer to Support Our Animals

One of the many challenges of a no-kill shelter is to find placements for animals while always having room to accommodate incoming animals in need. We go the extra mile to find special placements for some of our hard to place pets and partner with rescue and service animal programs to help find homes. We have also developed many programs to assist the adoption of our animals. Our volunteers are the backbone of these programs

and the key to their success.

The **Pet Pal Program** pairs a volunteer with a shelter animal to act as its mentor until they are adopted. Pet Pals teach shelter residents basic manners and improve their quality of life while at the Shelter.

Our **Foster Care Program** temporarily places shelter animals in foster homes allowing them the extra time and attention they may need to recover from illness, abuse, neglect or the stress of the shelter environment.

The **Hikin' Buddies** and **Town Walks Programs** afford our dogs some quality time off-campus with volunteers and new friends. The program supports our efforts to teach basic obedience and socialization skills while also giving the dogs exposure to potential adopters.

Shelter Event to Support Our Programs

Each July our annual summer benefit the **Dog Days of Summer** raises over one-third of the Shelter's operational funds for the year. You can support the shelter by donating goods and/ or services for our live and silent auctions, attending the gala, volunteering to help with the event, or buying tickets to the raffle.

Other community events that support the Shelter include The **Paw n' Pole** Nordic ski race, The **Furry 6K** run, **The Fur Ball** dance, and **Santa Paws** photo portraits (pictures of your pets with Santa.)





Big Al

Brought to the Shelter as a stray, Big Al was a wonderful cat full of personality and character. Unfortunately, it was soon discovered that he suffered from a painful eye condition called entropion. His eyelids, congenitally misshapen, caused his eyelashes to rub against his eyes every time he blinked. Once at the Shelter Al received the medical and surgical treatment needed to correct his eye condition and now he has a new forever home to call his own with the Nosworthy family.

Many shelters are forced to euthanize animals with treatable conditions such as Al's because they lack the resources to deal with medical/surgical issues. To remain a no-kill shelter we recognize the necessity of providing these types of services. This year when Rod and Carol Lemense were looking for a way to honor their daughter Susan's life they chose to give a legacy gift in her honor that allowed us to upgrade our surgical suite equipment. Thanks to Rod and Carol, Susan Lemense's legacy as a care taker of animals in need will live on every day at our Shelter.

Ways of Giving

Your gift can help sustain the Animal Shelter of the Wood River Valley's efforts and commitment to improving the lives of the animals in our community. The programs and services offered by the Shelter are funded almost exclusively by private donations. We depend on your support and generosity to keep our doors open. Please be assured that your contribution, large or small, truly makes a difference for our shelter animals. There are many ways to give and all donations to the Animal Shelter of the Wood River Valley are 100% tax deductible.

Honorarium and Memorial Gifts

Many supporters choose to celebrate, honor, or memorialize loved ones, both human and furry in the form of a direct donation to the shelter. These donations are a lovely way to acknowledge a loved one's life, passing, or special pet or event. Donations can be made directly to the shelter or on our website www.animalshelterwrv.org.

The Marmaduke Society

We celebrate and recognize benefactors' support through our giving circle, The Marmaduke Society. Members of this program pledge a donation and receive a virtual adoption of one of our Shelter pets. Their pledge underwrites the cost for their adopted animal's care while at the Shelter, waiting for their new permanent home. Marmaduke members are given regular updates on their "adopted" pets and are notified every time one of their animals is actually adopted. You can support the Shelter by pledging membership to the Marmaduke Society.

Planned Giving

Donors who want to support our mission of compassion well into the future can select the option of planned giving. For those individuals who choose to include us in their estate plans they can remember the ASWRV by naming us as a beneficiary in a will, living trust, life insurance policy, retirement account, creating a charitable remainder trust, or by giving cash or appreciated securities to establish a charitable gift annuity.

Sponsorships

Event sponsorship is a powerful way to gain valuable recognition for your organization through branding opportunities. Donors underwriting events allow us to leverage these donations for greater funding and support. In addition to sponsorship, many of our donors choose to also provide in-kind gifts that add value to raffle, live and silent auction portions of our major annual summer benefit.

Barkin' Basement Thrift Store

The Barkin' Basement Thrift Store is conveniently located at 111 South Main Street in downtown Hailey. All proceeds from the Barkin' Basement Thrift Store go directly to the Animal Shelter of the Wood River Valley to support shelter operations. You can support the Shelter by shopping at or donating goods to the store. All in-kind donations of goods are tax deductible. We greatly appreciate donations of gently used clothing, furniture, household items, art and collectables. Please call the Barkin' Basement at 788-3854 to arrange for the free pickup of donations.

Matching Gifts

Gifts can be made by companies to match the charitable donations of individuals. Generally employers match a gift only after the individual has paid his or her pledge and has expressed a desire to have the contribution matched. Ask your employer (or spouse's employer) about matching gift opportunities. Employers will often match your donation and that could double – or even triple- your gift to the Shelter.

Financials

Income

Fundraising	\$429,443.69
Donations	\$241,669.15
Net Barkin' Basement	\$127,110.05
Service Revenue*	\$121,892.03
Investment & Other	\$101,555.55
Grants	\$14,900.00
Total	\$1,036,570.47

*Service revenue includes: Adoptions, Licensing, Spay/Neuter & other Medical Services, Impounds, Cremation & Shelter-based (Non-Barkin' Basement) Retail Sales

In-Kind Gifts of Pet and Shelter Supplies

Gifts of shelter supplies do much to increase quality of life for our shelter residents as well as help keep our operational expenses down. Gifts of training supplies, enrichment toys, bedding, cleaning supplies, and other items from our shelter wish list are greatly appreciated.

Expenditures

Operating Expenses

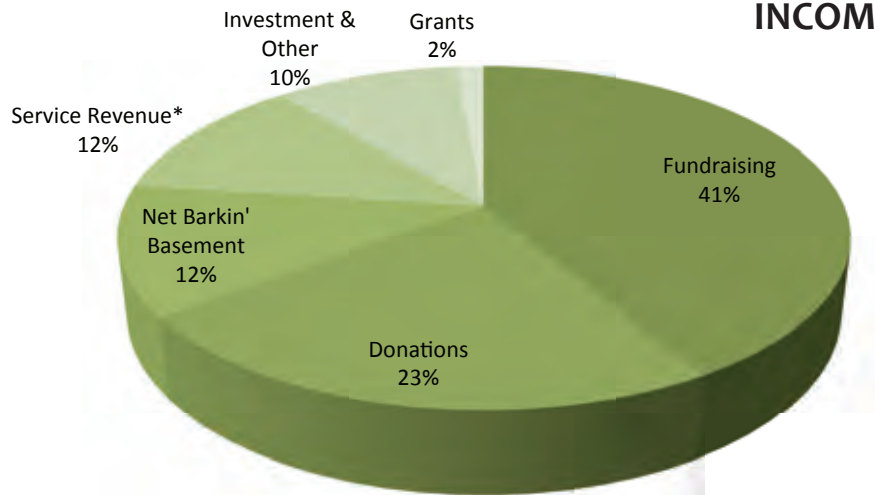
Programs	\$537,096.50
Administration	\$162,061.84
Fundraising	\$101,802.18
Subtotal	\$800,960.52

Capital Investments**	\$32,231.67
Property Development Planning Fund	\$203,378.28

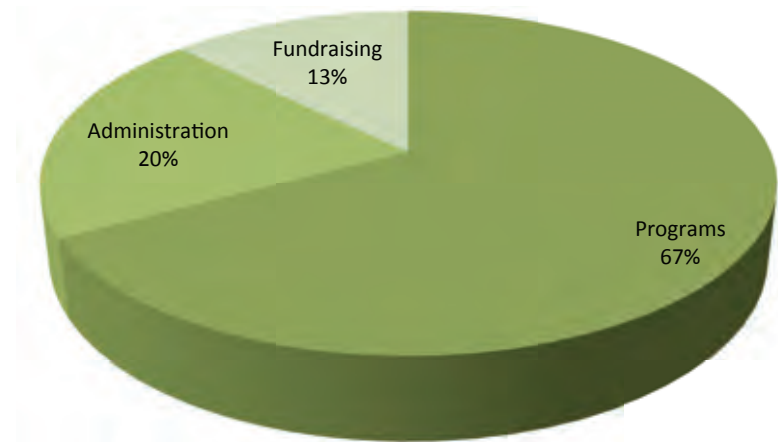
Total	\$1,036,570.47
--------------	-----------------------

**Capital investments includes: Medical equipment, fixed assets & improvements and new property acquisition expenses

INCOME



OPERATING EXPENSES



Donor Acknowledgements

Gifts over \$70,000

Ed and Carol Dumke

Gifts from \$10,000-\$20,000

Anonymous
Mary Bachman and William Downing
Borestone Mountain Foundation
The Cathy McCarty Living Trust
Sylvia and Bob Cook
Sherry Daech
Rodney and Carole Lemense
Jan and Bob Main
Bill and Guity Pierpoint
Sharon and Bart Rinker
Leidy Sue Samson
Scottvest, Laura and Scott Jordan
Elizabeth Simon
Susan and Phillip Usher
Julie Wrigley

Gifts from \$5,000-\$9,999

Vic and Sara Carlson
Linda Dempsey
Dayle Evan Fowler
Rita and George Golleher
Hayward Family Foundation
Kim Kawaguchi and Robert Disbrow
Mary Kay McCaw
Robert M. Rogers Foundation
Sidney E Frank Foundation
Kevin and Jeffra Syms
Janet Taggares
Cindy and Peter Urbanowicz
Theodore Waddell and
Lynn Campion-Waddell

Gifts from \$2,500-\$4,999

Judith L. Biggs
Margaret and Philip Block
Christine Ferguson and
David Berman
Frank and Suzanne Gerlits
Lawrence Goelman and
Virginia Cirica
Dan and Sue Guggenheim
Margaret Hicks
Mary LeTourneau and
Raymond Goettsch

Phyllis and Don Lundquist
Al and Leslie Luray
Paula McGuinness
Karen and John Melk
Diane Myerson
Priscilla Pittiglio
Doug and Susan Rhymes
Margot and Richard Silver
Richard Wilsker
Buddy and Shay Wilton



Gifts from \$1,000-\$2,499

Anonymous
Anonymous
Eric and Joy Allen
David and Carole Almond
Steve and Lisa Antry
Rosemary Aquilante
Baldy Biscuit Company
Leonard Barshack and Erin Smith
Don and Carolyn Benson
Marianne Bidart
Jack and Pat Billhardt
Janice and Thadd Blanton
Chris and Margaret Block
Gerald and Beverly Boas
Anita Braker
Mariann Byerwalter
Deer Creek Fund
Castellano-Wood Family
Dan and Micki Chapin

Buzz and Penny Coe
Sally Crevier and Michael Williams
Bonni and Peter Curran
Mary Ann Davidson
Beverly and Michael DeChevrieux
Francis and Paula DeLuca
Norma Douglas
Dan and Martine Drackett
Debra and Lyman Drake
Ranney and Priscilla Draper
Happy Fitzgerald
John Frey and Jane Letourneau
Tim Gardiner
Connie Graham
Sally Graham
Shirley and Harry Hagey,
HRH Foundation
Norman Halliday
Margund and John Haskell
Kathy and Paul Imle
Martha and Ross Jennings
Freddy Johnson
Ann Jones
Emily and Steven Karassik
Chris and Don Keirn
Peter Kremer
Kirstie Lambert
Joannie and Ron Lane
Jim Laski and Jennifer Card
Carole Lewis and Ted Walczak
Local Dog USA, Leslie Doheny-Hanks
and Robyn Watson
Don and Kaye Lofgren
Mari and Tom Lowe
Margot Larsen Ritz, Larsen Fund
Charlie and Nadine McWilliams
Mellow Mutts Pet Supplies,
Melinda Wirth
Sheila and Jerry Mells
David Meyers
Jennifer and James Milgard
Kimberly and Steve Miller
John and Cherie Morris
Matt and Mary Murray
Andrea Nelson and Rod Harten
Anne and Bob Nugent
Robert and Beverly O'Neill
Michael and Esther Ochsman
Robert and Ann Osher



Thank you to our Donors

We recognize the following supporters who made monetary contributions to the Animal Shelter of the Wood River Valley from January 1- December 31, 2010.

When you make a donation to the Animal Shelter of the Wood River Valley your gift helps support our many services including: adoptions, behavior & training, animal care, animal welfare education, foster care, reuniting lost pets with their owners, animal care services for victims of domestic abuse, pet food for families in need, animal comfort for the elderly, sheltering of stray, abandoned and unwanted animals, and our community spay/neuter program.

We thank you for helping our work to go on.

Patricia Pemberton
 Thomas Perakos
 Shannon Pollard
 Bill and Linda Potter
 Blake and Terri Quinn
 Virginia Randt
 Les and Estelle Reid
 Dan Riviera
 Lois Rosen
 Ruscitto, Latham, Blanton
 Mary Ann Ryan
 Carole and Mike Sampson
 Jerry Schwartz and Sharon King
 Joan and Jay Sheets
 Tom Sherby and Greta Hansen
 Deborah and Rod Sievers
 Sherry and Jeffrey Steinberg
 Maggie and Dave Sturdevant
 Sun Country Management, LLC
 The ReSource Trust
 Michael Tompkins
 Fred and Jill Vogel
 Alice Walton
 Del Webber
 Wodecroft Foundation
 Wood River Insurance,
 Greg and Annie Bloomfield



Gifts from \$500-\$999

Susie Alban
 Diane Anderson
 Bellissimo, Mike and Terry Murphy
 John and Kay Besteman
 Lynn and Sharon Bockemohle
 Karen and Chuck Bohlke

Graeme and Norah Bretall
 Brian and Susan Buckley
 Edie Cary
 Conrad and Minna Casser
 Chris and Gina Cey
 Charlie's Heating and Refrigeration,
 Pete and Marcia Collado
 Kam Cirica and Richard Gronos
 Linda and Dale Closner
 Sue and Earl Cohen
 Margie and Cam Cooper
 Sophie Craighead
 Creative-I, Amy Burditt &
 Anne Jestadt
 Roger and Janet DeBard
 Ken and Maggie Dolan
 Linda and Bob Edwards
 Lauren Jellinek Flower
 Cecelia Freilich
 Terry Friedlander and Robin Leavitt
 Cally Galpin
 Rivian and Stuart Glickman
 Norie and Stuart Goodell
 David and Edyth Goodman
 Helcia Graf
 Elizabeth and Peter Gray
 Thomas and Gitti Grohmann
 Hailey Coffee Company
 Cheryle Hall
 Frank Halverson and Marcia Lee Kent
 Audrey Hancock
 Carol and Len Harlig
 Virginia Hunt
 Bev and Bill Jaeger
 Wendy Jordan
 Eileen and Robert Judell
 Tami and Skip Kammer
 Linda and John Keane
 Richard Koffey and Barbara Thrasher
 Joan Lamb
 Danny Lane
 The Learning Garden, LLC
 Sheila and Ray Liermann
 Kathy and Wally Limburg
 Janice Lowen
 Pamela Lyford
 Penny Mandell and Jan Sunday
 Kiki Martin
 Anthony and Audrey Mattos
 Murray and Mary Sue McClain
 Margery and Nathan McGrew IV
 Patrick and Pamela McMahan
 Michael and Linda Menser

Jo Murray
 Robert Nelsen and Ellyn Hennecke
 Perlstein Foundation
 Cindy Phelan
 Mary Anne Pinkerton
 Leslie Pope
 June Ray
 Betsy and Bob Reniers
 Nancy Rivetts
 Vern and Cheri Rollin
 Darrell and Paula Rubel
 Mark and Amy Sauvageau
 Rogers and Barbara Severson
 Lori Shanks
 Hellyn Sher
 Carla Sinclair
 Craig Spiller
 Evan Lister Stelma and
 Bart Lassman
 Deborah Stonesifer
 Nancie Tatum and Thomas Henning
 Jack and Gail Thornton
 Carol and Randy Updyke
 Felisa Vanoff
 Nickye and George Venters
 Marilyn and Weldon Wankier
 James and Sheila White
 Van and Vicki Williams
 Mia Wolff
 Wood River Women's Charitable
 Foundation Member's Fund in the
 Idaho Community Foundation
 Jeanne and Bill Wright

Gifts from \$250-499

Anonymous
 Judy and Sid Alpert
 Heidi Baldwin
 Elli and Jerry Bernacchi
 Cat, Cyn and John Besteman
 John and Martha Bolliger
 Brooke Bonner and Kyle Baysinger
 Larry, Sandy and Bradford Bosley
 Greg and Kathy Boylston
 Kristine Bretall
 Ronald and Vicki Browne
 Edward Bulchis Theresa Gallant
 Candida and Bartlett Burnap
 Delores Cahen
 Sam and Marie Cochran
 Bob Corker and Elizabeth Schwerdtle
 Maureen Coyle
 Nancy Crandall



Dan and Missy Cullen
 Ed and Susan Cutter
 Barbara Danielson
 Barbara Dargatz
 Megan Davis and Paul Stevenson
 Missy DeKay
 DL Evans Bank
 Shay Doll
 Richard and Anne Dressell
 Melissa and Brian Elkins
 Noel Ellman
 John and Sandra Flattery
 Peter and Deborah Flood
 Carol and Paul Fremont-Smith
 Gary and Judy Frugard
 James Geier
 Colin and Jill George
 Jon and Donn Gerstenfeld
 Robert Gwinner
 Margaret and Jack Haase
 Beatrice Haemmerle
 Paula and George Hauer
 Mike Hawkey
 Diane and Scott Heiner
 High Altitude Fitness,
 Kevin and Holly Mora
 Patty Holley
 Carol and Gene Holman
 Stephanie Honan
 Steven and Janet Houts
 Bonnie and Dean Hovencamp
 Will and Brooke Hovey
 George and Leslie Hume
 Maxine Isaacs

Susan and Peter Jackson
 Judith A. Jellinek
 Carol Jensen
 Jivaro, Inc.
 Ed and Camille Kassatly
 Diane Kneeland
 Susan Koharski
 Patricia Lane
 Don Larson and Gregory Guy
 Ruth Lieder
 Marie and Werner Martin
 Stuart and Flora Mason
 Charles and Janet Meyer
 Nancy and Jeff Mihalic
 Pat Millington and Claire Turner
 Maureen Monte
 Cynthia Murphy and James Wilson
 Holly Nelson
 Richard and Carol Nelson
 Richard Novik
 Roger and Sheron O'Connell
 Tom and Jane Oliver
 Phyllis Parvin
 Barry Peterson and
 Candice Rosenberg
 Brooke Peterson
 Susan and Mel Plutsky
 Barbara and Ray Polk
 Kathy Reeder
 David and Barbara Rognlien
 Tammy and Bill Sandke
 Jolyon Sawrey
 Lawrence Schoen and
 Rebecca Eichhorn



Ralph and Shirley Shapiro
Sleight of Hand Cellars
Ivy Slike
Stephany Smith
Judy and Richard Smooke
Denise and Michael Smyth
Jeff and Judy Sparks
Gertrude Stretton
Talley Vineyards
Ann and Nancy Thomas
Thunderpaws, Inc.,
Hurley Hamilton
Susan Thurston Grathwohl
Terry Tischer
Peggy Wagener,
Frances E. Streit Trust
Jay and Linda Wagner
John and Ellen Wallace
Marion Watkins
Doug and Juli Webb
Gerald and MaryAnne Whitcomb
Lynn Whittelsey
Jaci and Mason Wilkins
Brad and Mary Wirth
Susan Wolford
Mike Wolter and Molly Goodyear
Bob and Patience Ziebarth
Zions Bank



Gifts from \$100-\$249

Anonymous
Anonymous
Anonymous
Anonymous

Sherry and Doug Aanestad
Duane Adams
Lisa Marie Allen
Andy and Carol Anderson
David Anderson
Peter Anderson
Stephen and Sharen Anderson
Ted and Leila Angle
John and Antoinette Ashworth
David and Lexa Ayer
Lynn and Claire Bailey
Maureen and Donald Baker
Vidvuds and Sharon Bandrevics
Betty L. Barnes
Kent Bell and Julie Quayle
Ann Bertell
Mario and Ann Bisio
Holly and Edgar Blair
Emmy Blechmann
Jacob and Ruth Bloom
Jay Blumenkopf
Marc and Sheri Bocci
Susy Boettcher
Rojeanna Bohl
Joy Bond
Chas and Torene Bonner
Robert Bouttief
Cherie Boyer
Ken Brannon
Betsy Brooks
Carol and Douglas Brown
Stoney and Shawna Brown
John Bryan
Tracey and Patrick Busby
Cinda Caine
Bob and Laura Caminiti
Pat and Bob Campbell
Barbara Capik
Mary Ellen Card
Jay Cassell and Gay Weake
John Cathey
Phillip and Laurie Catron
Marsha Chandler and
Pete Newman
Lisa Chaney
Nancy Chapin
Doug and Ann Christensen
Lucy Chubb
Cimarron Lofting William Amaya
Bruce and Kathy Clark
Mary Cone
Paul J. Connolly
Deb Cornwell

Colleen Crain and Jim Liesenfeld
Tom Crais
Shawn Crea
Gary and Susan Crowe
Mary Ann Cullen
Susan Cunningham
John and Karin Davies
Steve and Dolora Deal
John Didier and Jessica Johnson
Gloria Diethrich
Pat Dixon
Matthew and Heidi Dohse
Sherwin and Janet Drobner
Randi and Fred DuBois
Janet Dunbar
Darlene Joy Dyer
Gadrie Edmunds and David Keir
Joan Espe
Paula and Jeffrey Fagerholm
Charles and Susan Faris
Jessalyn Farrington
Scott Featherstone
Barbara Feehan
Mike and Leslie Feltman
Ginger Ferries, Hound Around
Judith V. Ferries
Nancy and Chuck Ferries
Andy Firtel
Martin Flannes
Heidi Flood
Rebecca Follo
Karyn Forsyth
Michael Franceschini
Margery and Bernard Friedlander
Kimberly Fullerton and Stephen
Johnson
Wolf and Feli Funke-Riehle
Jeff and Lee Fuqua
Robert and Kathryn Gardner
Sarah Gardner and Ron Harrison
Mack and Ann Gasaway
Gary and Tamra Gensemer
Barbara Gerrish
George and Kathy Gibson
James and Ellen Gillespie
Candy Girton
Glenna Glover
Deana and Morley Golden
Robert Goldsmith and Lee Hofley
Laurie Goodman
Cathy Gorsuch
Kevin P. Grant
Jami and Mark Grassi



Donald Gregory
Kathy Guinn
Gil and Karen Guisler
Brian Hancock
Greg and Leta Hansen
Richard Hare
Gordon and Elaine Harfst
Jennifer Harper
Tim and Lynne Harris
Florence and Tom Harvey
Hillary and Chad Hayward
Michael and Irene Healy
Diana Hewett
John and Judith Hill
James and Sheri Hodge
Madora and Einar Hoff
Lisa Holley
Virginia and Jeff Holloway
J.K. and D.L. Holman
Ben Holmes and
Carol Scheifele-Holmes
Leslie and Maurice Hornocker
Phyllis Houk and Mike Roundy
Elizabeth and Steven Huish
David and Susan Hummon
Nancy and Joe Humphrey
Heidi Husbands and
Stephanie Hansen
Mary Hughes
Merel Imel
Pamela Irby
Barbara and Gordon Jack
Glenn Janss
Jim and Wendy Jaquet
Page and Maureen Jenner

Kathy and Charlie Johnson
Kathryn Jones
Shearson Jones
Bill and Kris Josey
Richard Kahn
Lynn and Bruce Kaplan
Cindy Kay
KB's
Curtis Kemp
Vickie Kensington
Chris and Doran Key
Ted and Diane Kiel
Cynthia Olney Knight
Bliss Knowles
Lorena Kocher
Bob and Susie Kopf
Barbara Kruse
Shari and Kyle Kunz
Rod and Linda Kvamme
Deborah Lagerquist
Elizabeth LaRocca
David and Suzi Lee
Joan Levis
James and Andrea Lieberman
Bob and Patti Lindberg
Kristen and Per Lindfors
Eleanor G. Lister
Edward and Elise Lobel
Susan Lovett
Stephen and Mary Malkmus
Tara Martin
Andrew Mayo and Christina Gearin
Kim Mazik and Steve Carlisle



Paige McAllister
 Lisa and Wilson McElhinny
 HD and Sharon McNee
 Jan and Mike Mead
 Ronald and Joan Mendelsohn
 Jill Metcalfe
 Claudia Meyer
 Jeanne Meyers and Richard Carr
 Lisa Mirams
 Nan Mishkin
 Caroline B. Mitsch
 Louisa Moats
 Kathy and Matt Morell
 Julie and Jon Moses
 Mountain West Bank
 Julie Muer
 Francis Mullen
 Joan and Tim Mylnar
 Janet Nathanail
 Richard and Carol Nelson
 Joanne Nissen
 Dorothy North
 Drew and Ann Nosworthy
 Marc and Sally Onetto
 Barbara and Simon Ostler
 Matthew Ostmann
 Owyhee Motorcycle Club
 Clair and Margo Peck
 Kristy Pigeon and John Prudden
 Brenda Powell
 Kathryn Powell
 Marjorie Praegitzer
 Michelle and Tom Praggastis
 Ann and Phil Puchner
 Sara Ratekin
 Eleanor M. Reed
 Andrea Reid
 Bill and Lindy Richardson
 Sid Rivers
 Keith Roark
 Rhonda Robbins
 Mary and Christina Roberson
 Anthony Robinson
 Carolyn Robinson
 Hannah Rogers
 Robert and Beth Rohe
 Lisa Rose
 Bob and Kate Rosso,
 The Elephant's Perch
 Cathie and Denny Royston
 Louise Royston
 Pamela and Andrew Sabel
 Karna and Fritz Schafer

Joan Scheingraber
 Marilyn Schwartz
 Seagraves Family Foundation
 Greg Sedlock
 Kathy and Greg Seitz
 Glen and Vicki Shapiro
 Patti Sheehan Richard and Barbara
 Shelton
 Nancy and John Shepherd
 Frank Shrontz
 Linda Sisson
 Billie Smardon
 D. William and Annette Smith
 Cordy and Maryann Snyder
 Leslie Speck
 Susan Spezza and Gregory George
 Frances J. Spurlock
 Tony and Tricia St. George
 Lynn Stallard and Glenn Carter
 Gene and Sharon Steiner
 Mark and Elaine Stillwell
 Jeff Stone
 Carol and John Sullivan
 Jani Sutherland
 Tricia Swartling
 Rhonda Taylor
 Thomas and Mary Lou Tebb
 Michele Teriano
 Judy and Mike Thesing
 Carol Thielen
 Charles and Christina Thompson
 Charlotte Thompson
 Hazel M. Thorne
 Steven Thorne
 Jack and Gail Thornton
 Erik Tiles
 Jeffrey and Kathleen Uberuaga
 Theodore and Shelley Vanderheyden
 Vandeventer and Carlander Architects
 Kay Vanhees
 Carol and Mike Wade
 Suzanne Walsh
 James and Hermione Watkinson
 Liza Weekes
 Katherine Wessel
 Lita West
 Max West
 Patrick Whitcomb and Patty Napier
 Kelly and Nathan White
 Mary White
 Diana Whiting
 Kathy Williams
 Michael G. Williams

Sam and Shelley Williams
 Sharon and Charles Williamson
 Tracee Wolff
 Wood River Fire and Rescue



Gifts under \$100

Anonymous
 Shannon Allen
 Anthony Anderson and Julie Bell
 Ashlynn Auger
 Evelyn Avery
 Stu Backstatter
 Sue Bailey
 Sydna and Barry Baker
 Tawni Baker and Jamie Trevino
 Josephine Baldwin
 Anna Barnard
 The Estate of Robert W Bartlett, II
 Harriet and Richard Bass
 Linden and Whitey Beck
 J. Matt Bell
 Jayne Bella
 Sandra Berk
 Daniel Bernhard
 Gary and Heather Black
 PD and Linda Black
 Hanna, Brian and Brenda Blackwell
 Susan and Arnold Blair
 Hugh and Kathleen Blue
 Elise Boeger
 Jannell and Rick Boepple
 Sandy Bongard
 Barbara Boyer
 Marc and Helen Boyle

Carol Bradshaw
 Leisa and Kenneth Brait
 Diana Brambrink
 Carlene Brasel
 John and Minette Broschofsky
 Ian Bojarski
 Jan Brown
 Parker Bryan
 Eliza and Jason Buck
 Mike Burke and Terry Thompson
 David Burns and Diane Lischo
 Jan and Gerry Burrell
 Joyce Burrell
 William and Helen Byington
 Cathie Caccia
 Rilla Campbell
 Walter Campbell
 Richard Carrothers
 Louis Cassano
 Andrea Cavanaugh
 Gordon Cavanaugh and
 Anne Aganon
 Chapter One Bookstore
 Mary Charlton
 Lynette and David Christensen
 Paul Christensen
 Bill and Bridget Cimino
 Beth Citron
 Norman and Joan Clark
 Don and Leah Conyers
 Kathleen Cooper Grammer
 Don Copelin
 Maria Corbit
 Diane and Jeff Cordes
 JoAnne Cowulich
 Diann Craven
 Creative Edge
 Steven Crosser
 Ernest Cummings, Jr.
 Jim and Kristine Curran
 Ted and Crystal Dale
 Sydney Darling
 Judith and Ben Darrow
 Judi Davison
 Denise DeCoster and Ron Barclay
 Judy Demetre
 Jo-Anne Dixon and James Coyle
 Danielle Doerflein
 Patricia and Robert Dootson
 Jen Douglas and Jennifer Cook
 Owen and Carol Downard
 Carol Doyle
 Stacie Doyle

Buck Drew
 Ashley Dreyfus
 Beth M. Duke
 Kathleen Eder
 Diana Ellison
 Robin Englehardt
 Dale and Jeanne Ewersen
 Meghan Faherty
 Criss and Robert Fallowfield
 Mary and Daryl Fauth
 Pam Fend
 Dorothy Ferguson
 Susan and Nathan Fierman
 Daralene and John Finnell
 Laurie and Theron Fiscus
 Gerry Fisher
 Mike Fishman
 Janie and Jack Flammer
 Pamela Fleischer
 Kristin Fletcher
 Joyce Fogg
 Karsten Fostvedt, St. Francis Pet
 Clinic
 Louis and Elsa Francisco
 Marian and Charles French
 Ann Fuller
 Maren Fuller
 Gaylene Gabrinetti
 DK and Louise Gallagher
 Richard and Kathleen Gariepy
 Philip W. Gilbert
 Maxine Gilchrist
 L'Anne Gilman
 Corey Graham





Michelle and Harry Griffith
 Peggy and Jack Grove
 GS Engineering
 Gloria and Jeff Gunter
 Beth Gunton
 Lars and Heather Guy
 Edith and Gary Hadden
 Joanna Hale-Hilton
 Joe Hall
 Halo Hair Studio
 John, Theresa, and Emily Hancock
 Gayle Hansen
 Michelle Hartman
 Julie Harvey
 Christine E. Haseltine
 Lori Hayes
 Mollee Hecht
 Gary Heindel and Jeanie Sutherland
 Sarah Hemmingson
 Sandra and Richard Hesselbacher
 Shirley Hobbs
 Barbara and Don Hogan
 Mary Hogan
 Lars and Shawn Hovey
 Laura Hubbard
 Lawrence and Mary Jane Huck
 Rachel Humphrey
 Brenda Hyde
 Maria Elena James
 Scott Johnson
 Jim, Lori and Megan Johnston
 Janis Jones
 Just Give
 Nola and Connie Kacalek
 Robert and Linda Kahn
 Judy Kaiser
 Josh and Liz Kantor

John and Jean Kearney
 Kaye and Gerry Kearns
 Janet Kellam
 Guru Khalsa
 James and Joan Kino
 Nicole Kohn
 Jack and Connie Koonce
 Irwin Kourland
 Vernon and Karen Kubiak
 Stratton Laggis
 Jill Lawson and Clara Martin
 Tim and Melissa Lee
 Marie Lerch
 Kathie A. Levison
 Robert and Jan Leyse
 Susan and Philip Lindsay
 Melissa Lipton
 Local Favorites
 Caryn Long
 Shannon and Cliff Luden
 Lindsay Ludwick
 Jennifer Lyons
 Judith and Kenneth Lyons
 Linda MacDonald
 Carl and Kathleen Manus
 Dawn Marcova
 Jan and Steven Marx
 Julie and James McGaughey
 Susan McKee
 Bruce and Michelle Mcstay
 Robert Mercurio
 Heather and Kurt Meyers
 Scott Miley
 Ed Miller
 Ronald Miller
 Sherry Miller
 Patricia Milligan
 Jennifer Montgomery
 Morse Antiques
 Julie R. Mosser
 Stephen and Careda Mowry
 Tracey Munk
 Lorenzo and Elizabeth Murphy
 Sabine Muskar
 Roma Nelson
 James C. Nemecek
 Dean Nichols
 Richard Nielsen
 Jennifer Noel
 Carmen and Edward Northen
 Harry Northrup
 Darlene Norton
 Phil and Judy Norton

Lindy Novak
 Matt and Andrew O'Connor
 Trish Oliver
 Debbie Oneida and Rocky Johnson
 Barret, Olivia and Julia Ott
 Alice Packer
 Lilia and Henry Page
 Susan Passovoy
 Jill and Ruby Payette
 Donna Payne
 Marlon Peck
 Marda Phelps
 Mary Anne Pinkerton
 Judy Pittman
 Daniel Plax Alison Oswald
 Greg and Sheila Plowman
 Raymond and Diane Pulverton
 Pat Radeke



Sheryn and Walter Rapchinski
 Nancy L. Ray
 Warren Reed Rita Sprinkel
 Chris and Marc Reinemann
 Alain and Karla Rinckwald
 Angela Robertson
 Ronile and Leroy Robinson
 W. Brent and Beverley Robinson
 Ken and Catherine Rockwell
 Jill Roland
 Snaque and Ford Rollo
 Marcie Royle
 Maggie Rudigoz and
 Richard Goldberg
 Allen and Diana Russell
 Karen and Keith Saks
 Jorjan Sarish
 Gary and Rosemary Scheihing,
 Shine K-9

Barbara Scher
 Daniel and Sarah Schiavone
 Gerald Schroeder
 Joe Scott
 Brigid and Bass Sears
 Anita and Keith Selner
 Richard Sharbinin
 Joyce Shay
 Bud and Valerie Siemon
 Penelope Silver
 Silver Sage Council # 78
 Jimmie Simpson
 Janis Smith Tedrow
 Elaine Somerville
 Cory Spackman
 Barbara and Allen Spafford
 Richard Stark and EJ Harpham
 Nina Steffens
 S.E. Stewart
 Elizabeth Stofft
 Jim and Renee Strang
 Sturtevant's Mountain Outfitters
 Jitka Sullivan
 Sun Valley Adaptive Sports
 Alexandra Sundali
 Ellen and Tom Colbert Swenson
 Genie Swyers
 Bill Syms
 Jennifer Talmadge
 Barry Tanaka
 Tastevin Wines
 Alex and Ron Taylor
 Doug and Ann Taylor
 Scott and Jodie Taylor
 Bryan and Carly Tempest
 The Pet Nanny,
 Maria Corbit-Hartman
 Cindy Theobald
 Sheri Thomas
 Anna Thurman
 Barbara Tropea
 Kathryn and Scott Tucker
 Larry and Karen Tucker
 Pam and Dick Tucker
 Saul and Shirley Turteltaub
 Britt Udesen
 Vacation and Travel Services, Inc.,
 Jan Wasmann
 Ray and Debra Vadalma
 Max "Rip" Sewell
 Ronald Valentine
 Janie Varin
 Cathleen Verde

Linda Vick and Claire Holley
 Joel and Jeanne Vilinsky
 Judith Walker
 Margaret Walker
 John and Diane Wallace
 Shawna and Lily Ward
 Sue Warner
 Julia Ann Watson
 Rachel Wayt
 Dawn and Brian Webber
 Pat Weber
 Barbara Wedman
 Patricia Weir
 Elizabeth Alyshia Weller
 Sharon Wellsandt
 Michael Whyte
 Eldon and Carolyn Wicklund
 Carrie Williams
 Jan Williams and Charlie Anderson
 Dwight and Catherine Wilson
 Mandie, Donald and Rainey Wilson
 Steve and Diane Wingard
 Jeff and Laurie Winter
 Nancy L. Winton
 James and Alex Wise
 Susan Witman, Center Q Interior
 Design, Inc.
 Wood River High School
 Wanda Woodbury
 Susan Woodruff
 Mike Wuebker
 Darlene Young and Jon Engen
 Steven Zimrick
 Eugenia Zuckerman



Board of Directors and Management Group

Board of Directors

Jan Main, President

Cynthia Olney Knight, President-elect

Rosemary Aquilante, Vice President

Erin Smith, Secretary

Davis Hein, Treasurer

Marina Broschofsky

Sam Cochran

Christine Ferguson

Don Larson

Mary Letourneau

Sheila Liermann

Priscilla Pittiglio

Management Group

Jo-Anne Dixon DVM, Executive Director/ Medical Director

Robin Potts, Shelter Manager

Nadia Novik CVT, Operations Manager

Brooke Bonner, Director of Development & Communications

Andrea Parker, Thrift Store Manager



Future Goals

As long as there are homeless animals in Blaine County, our work is not done. While still caring for the animals in need today we are planning for the future. We want to ensure that in the future our organization can continue to meet the needs of our community and remain a no-kill facility.

We are proud to say that at the end of this year the Animal Shelter of the Wood River Valley completed a three year process to purchase 17 acres from the federal Bureau of Land Management in Vorberg Gulch, directly west of the current shelter location on Croy Canyon Road.

After 29 years of operation in the current building our animal shelter is overdue for additional space and improved facilities. While no specific plan is in place as of yet, we are excited for the possibilities that this new land acquisition brings to our organization and the community we serve.

Animal Shelter of the Wood River Valley
Post Office Box 1496
Hailey, Idaho 83333-1496

Return Service Requested



The Animal Shelter of the Wood River Valley
is a private non-profit 501(C)3 Corporation.
EIN # 82-0351171

Animal Shelter of the Wood River Valley
100 Croy Creek Road
Hailey, Idaho 83333
(208)788-4351

Animal Shelter of the Wood River Valley
Barkin' Basement Thrift Store
111 S. Main Street
Hailey, Idaho 83333
(208) 788-3854

Website: www.animalshelterwrv.org
Email: info@animalshelterwrv.org

NON-PROFIT ORG.
U.S. POSTAGE
PAID
BOISE, ID 83709
PERMIT NO. 679
